



Participant Copy

Photo: Downtown Greensboro, NC | Adobe Stock

REDLINING

Racial discrimination in housing & its lasting impact on health

Eli Saavedra Villatoro, PMP, MS, RDN, LDN
Health Education Division
Guilford County Division of Public Health



PART 1

Social Determinants of Health

PART 2

Historical Context

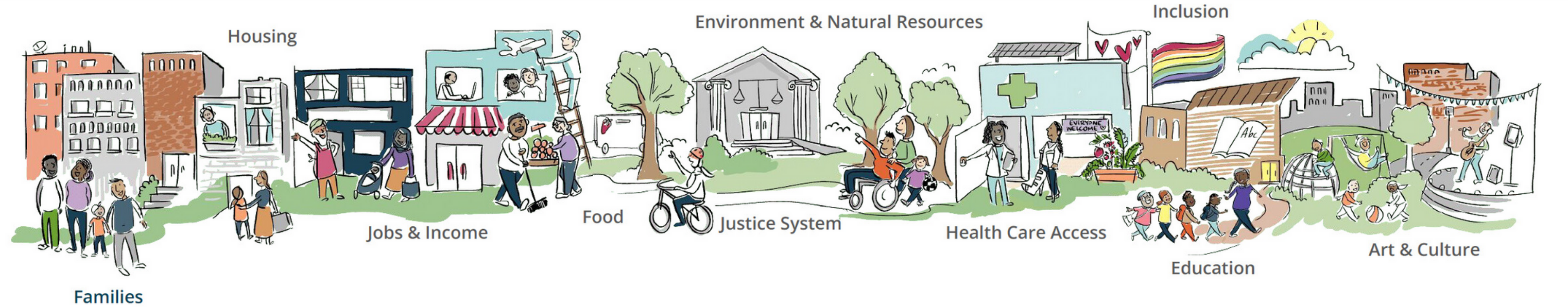
PART 3

Redlining

PART 4

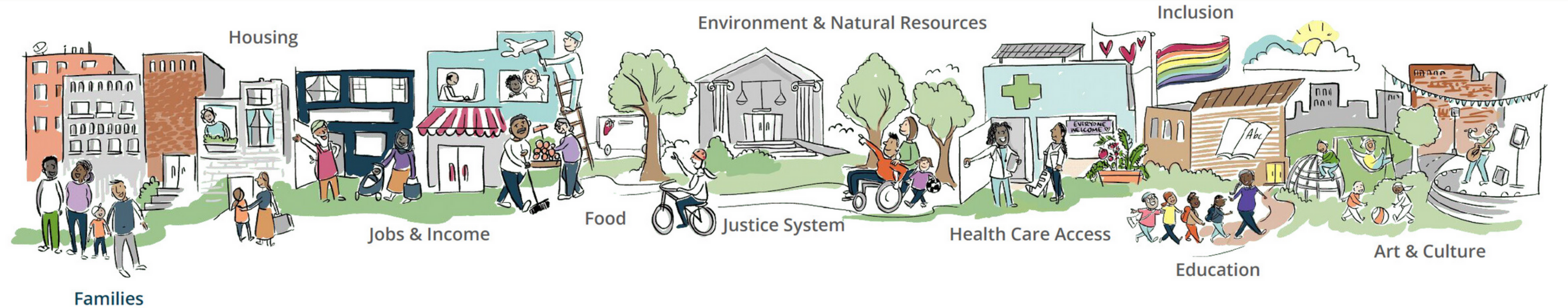
The Lasting Impact on Health

Outline



Social Determinants of Health

PART ONE



Source: Human Impact Partners

Social Determinants of Health

“The conditions in our environments where people are born, live, work, play, worship, and age...”



Historical Context

PART TWO



Black Codes

- Reconstruction (1865 - 1877)
- Limited freedom of formerly enslaved people
 - Employment
 - Compensation

Black Codes

Source: History Channel | 1880s



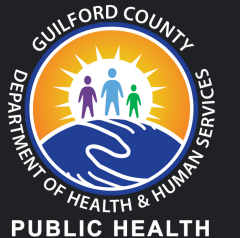
Black Codes

- Reconstruction (1865 - 1877)
- Limited freedom of formerly enslaved people
 - Employment
 - Compensation
- Ultimate goal - Control
 - Indentured servitude
 - Voting rights
 - Where you live and traveled



Black Codes

History Channel | 1880s





“Separate but equal”

- U.S. Supreme Court decision in Plessy v. Ferguson (1896)
- Jim Crow Laws expand across U.S.
- 1866 – 1967 (100 years)

“Separate but equal”

History Channel | 1939

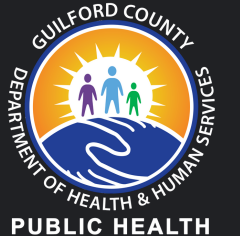
Jim Crow in North Carolina

- Parks
- Schools
- Restaurants
- Prisons
- Libraries
- Cemeteries
- Amusement parks
- Restrooms
- Municipal services



“Separate but equal”

Durham, NC | 1940



Redlining

PART THREE

Redlining

- **Home Owner's Loan Corporation (HOLC)**
- **Federal Housing Administration (FHA)**
- Denial of mortgage loans based on race and class
- 1933 – 1977

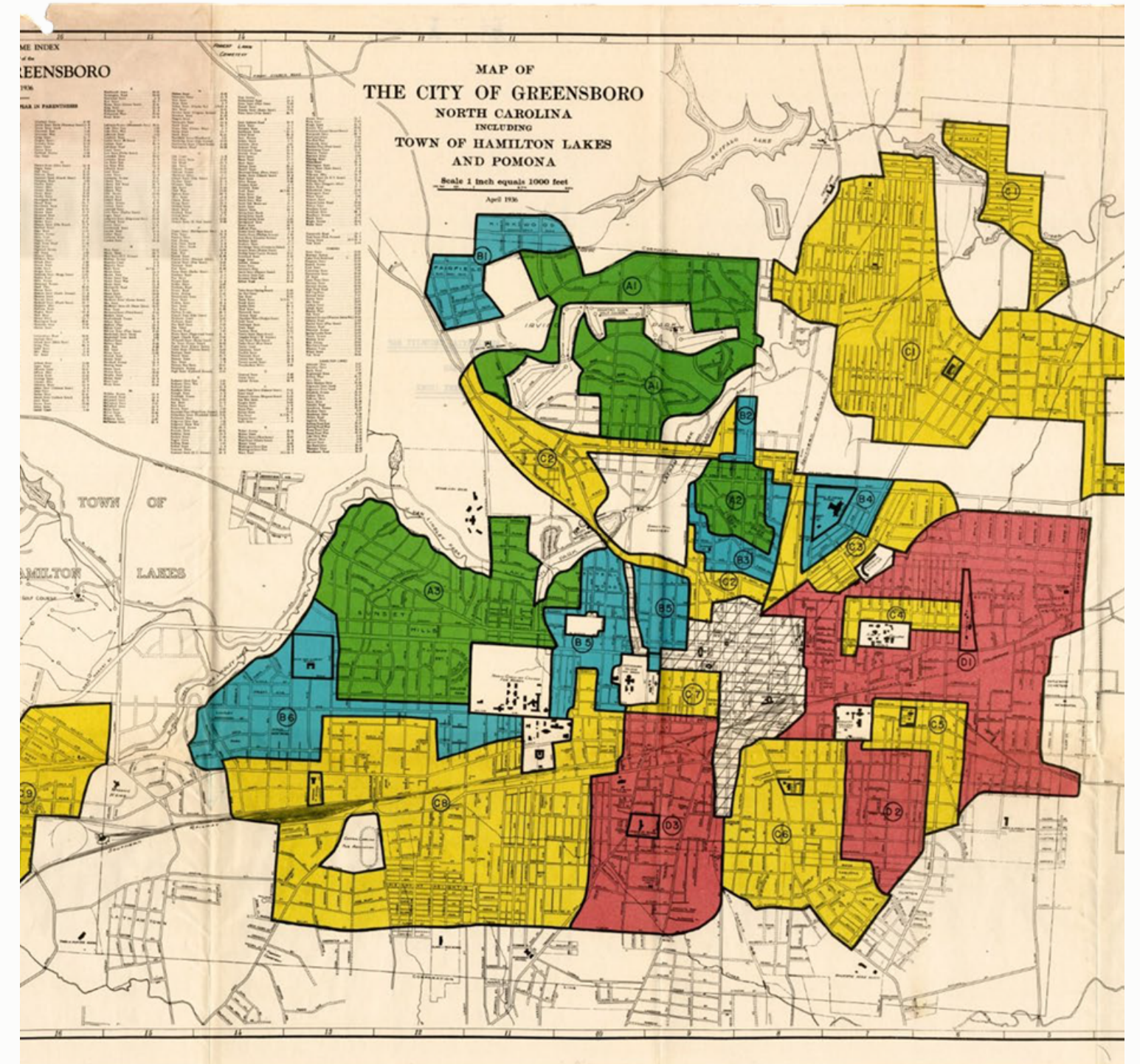


High Point, NC |

Credit: Jordan Green

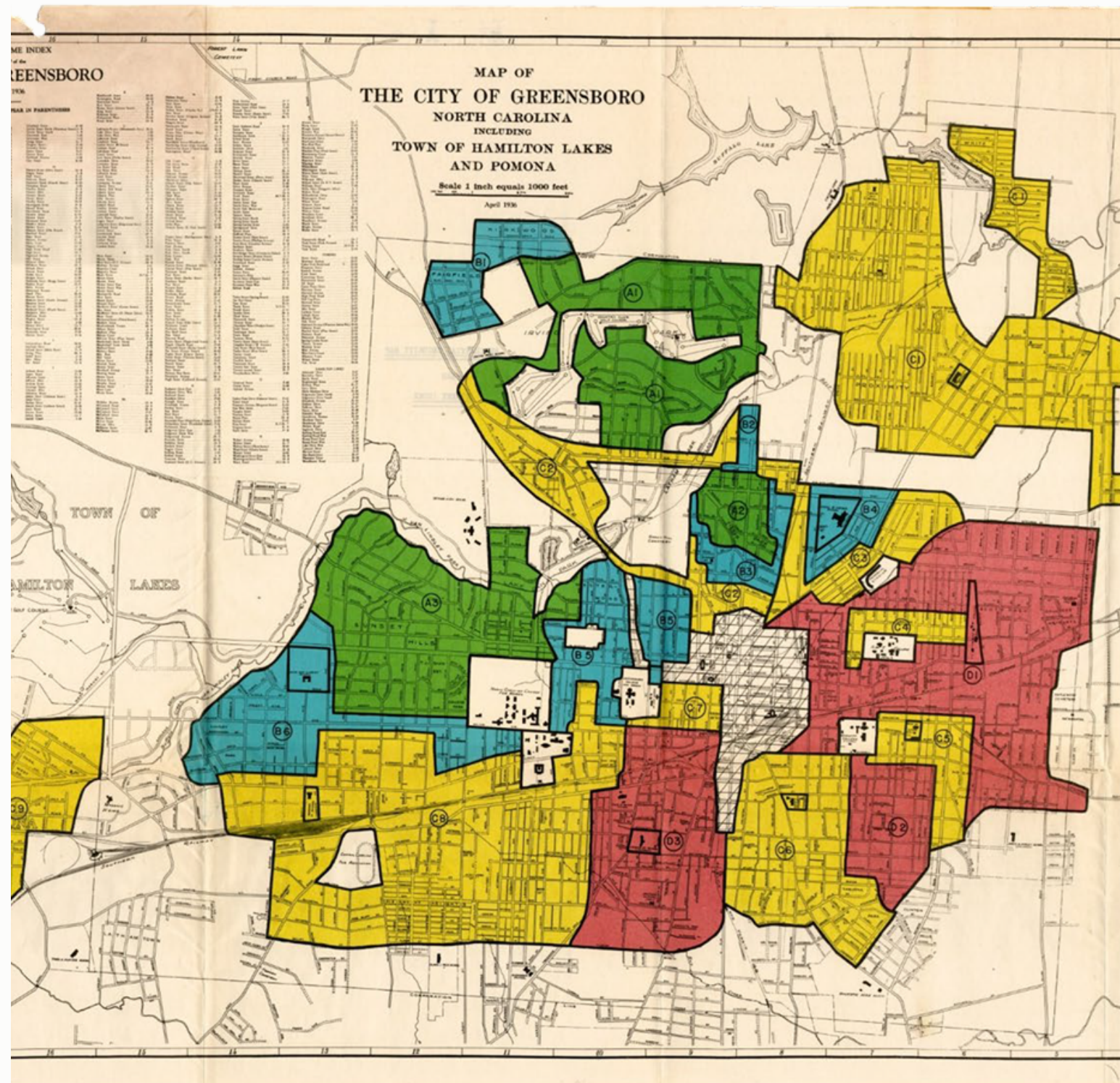
Home Owner's Loan Corporation (HOLC)

- Assigned one of four colored grades to indicate mortgage security
- Based on race and class of people living in neighborhood



Greensboro, NC | 1936

Source: Greensboro Historic Society



Home Owner's Loan Corporation (HOLC)

- Assigned one of four colored grades to indicate mortgage security in neighborhoods:
- **A** – “Best” (**Green**)
- **B** – “Still desirable” (**Blue**)
- **C** – “Definitely declining” (**Yellow**)
- **D** – “Hazardous” (**Red**)

Greensboro, NC | 1936

Source: Greensboro Historic Society



The Lasting

Impact on Health

PART FOUR

Social Vulnerability Index (SVI)

- Used to assess a community's capacity to prepare for, respond to, and recover from human and natural disasters (or disease outbreaks)

Social Vulnerability: the potential negative effects of communities caused by external stresses on human health (CDC)



The Brookings Institute | 2019

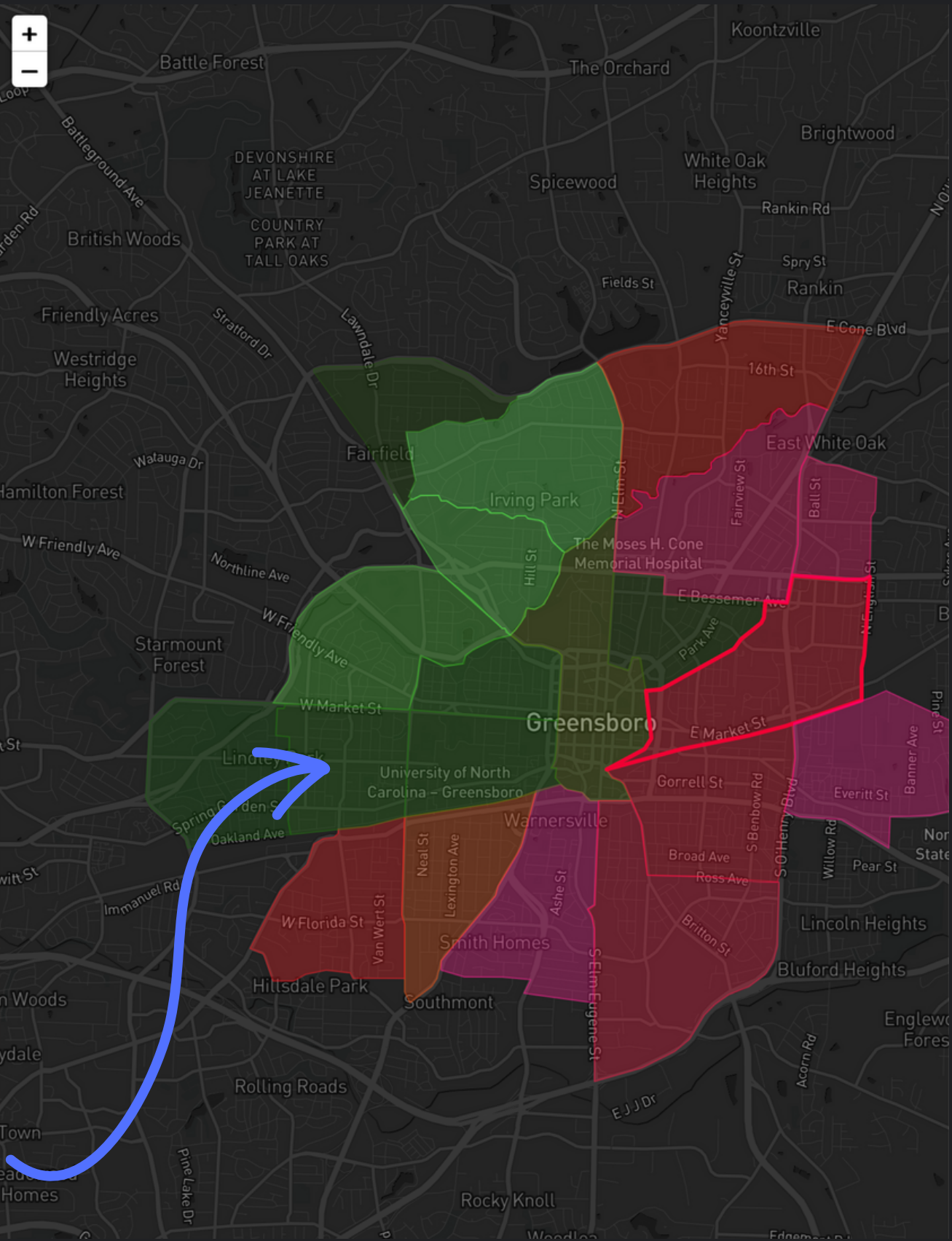
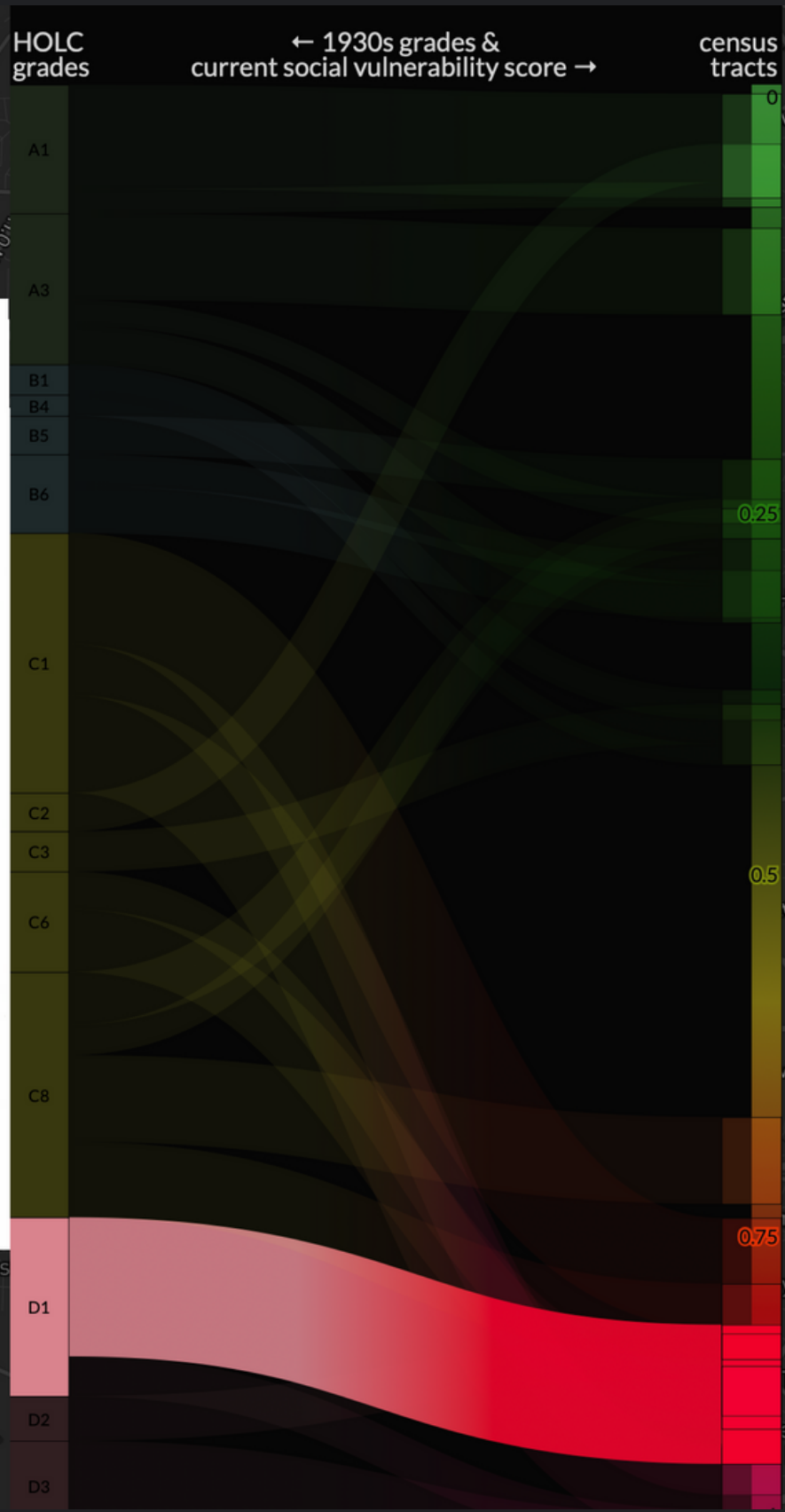
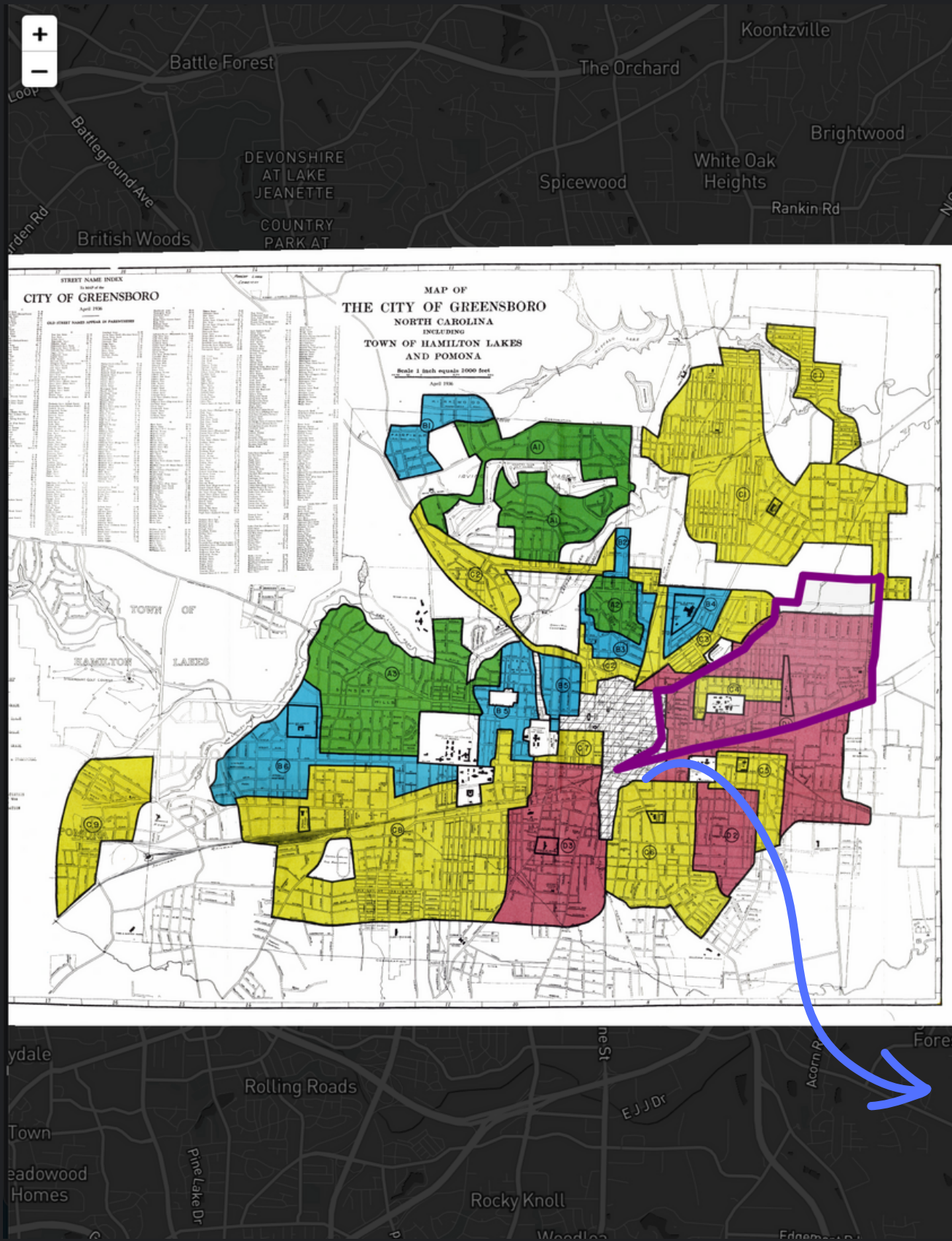
Social Vulnerability Index (SVI)

- Considerations:
 - Social & economic factors
 - Housing & transportation
 - Minority status & languages
 - Household composition
 - Disability



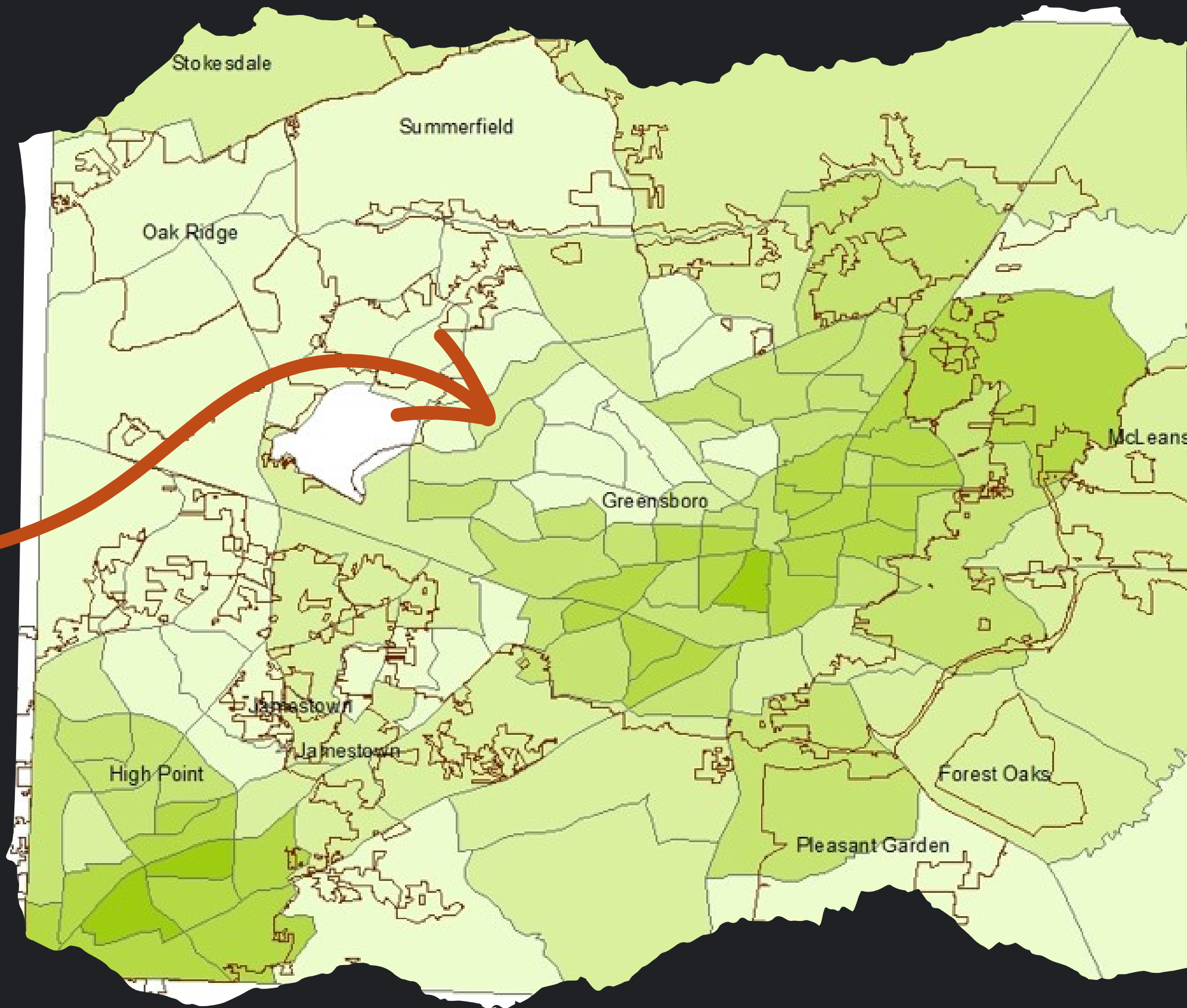
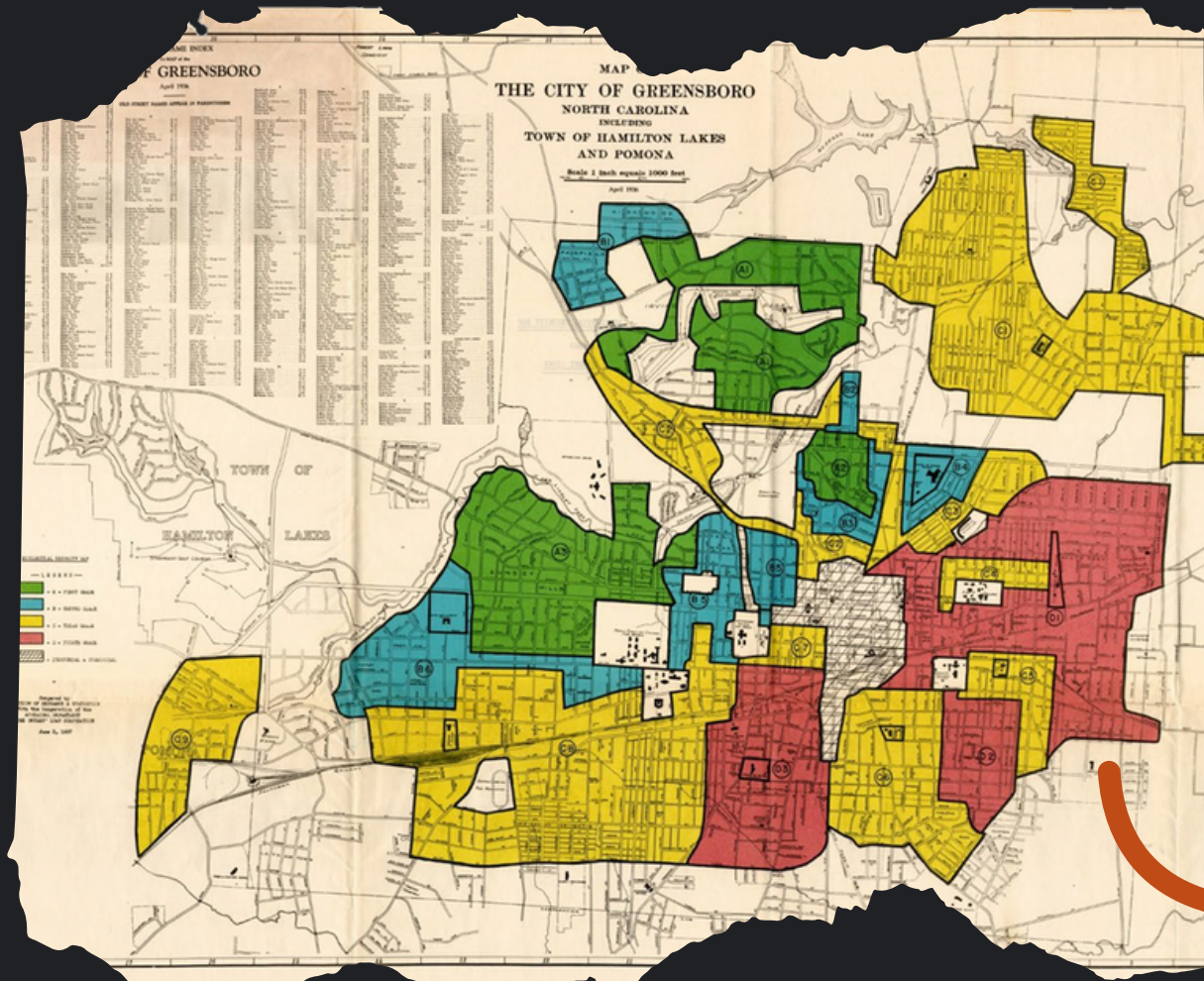
People line up for a COVID-19 test in a parking lot Monday May 11, 2020, in Milwaukee.

Credit: Morry Gash

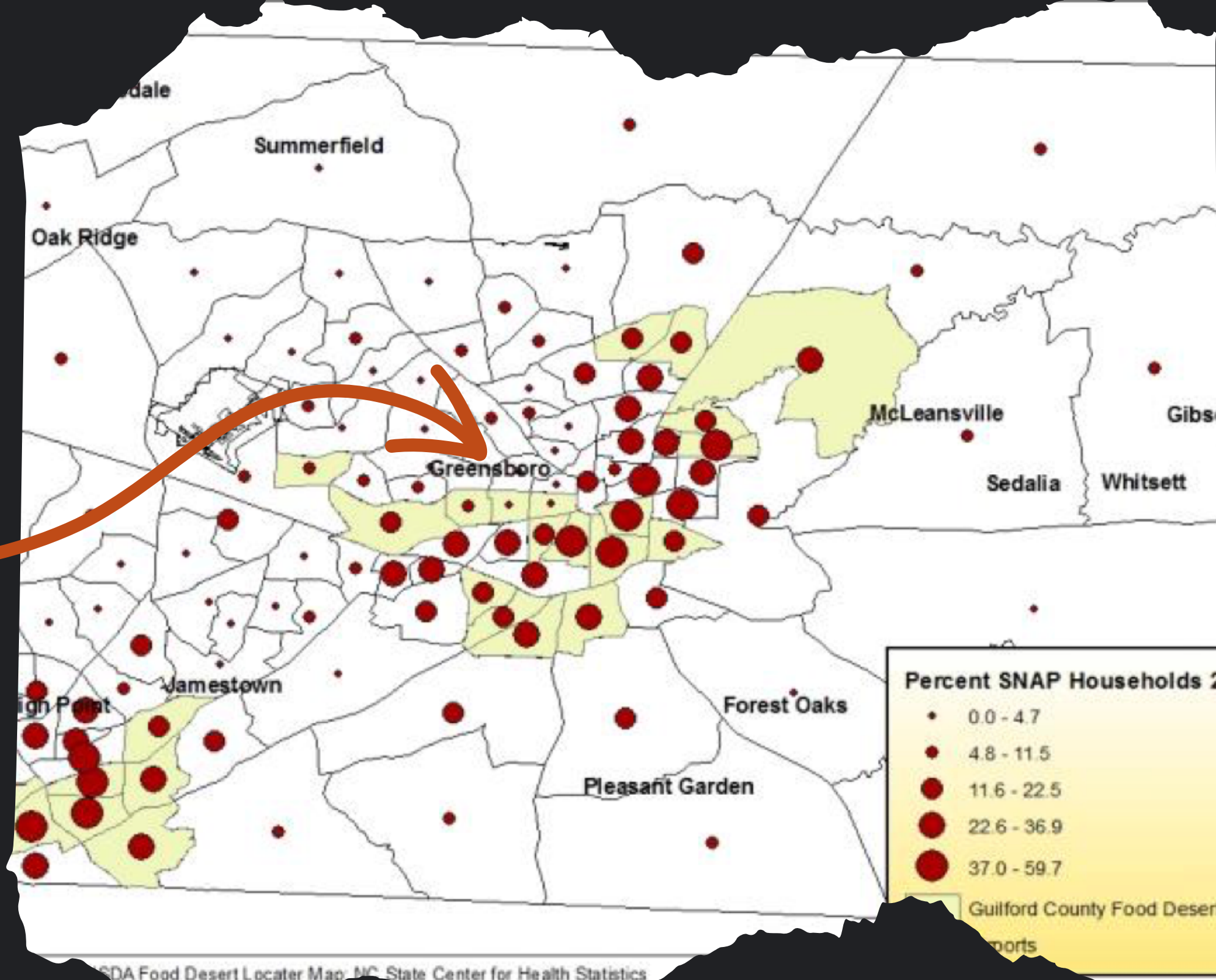
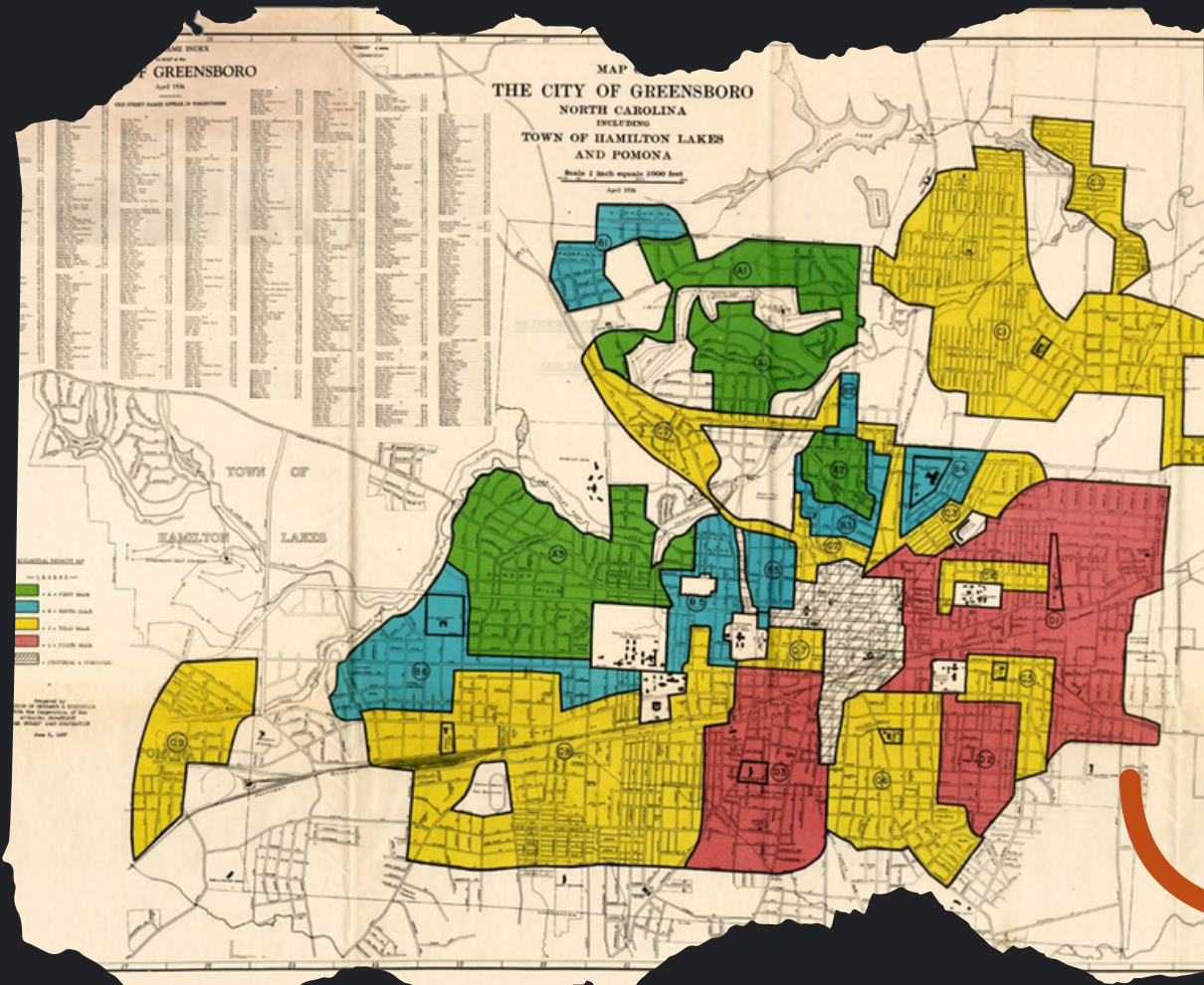


D – “Hazardous” (Red)

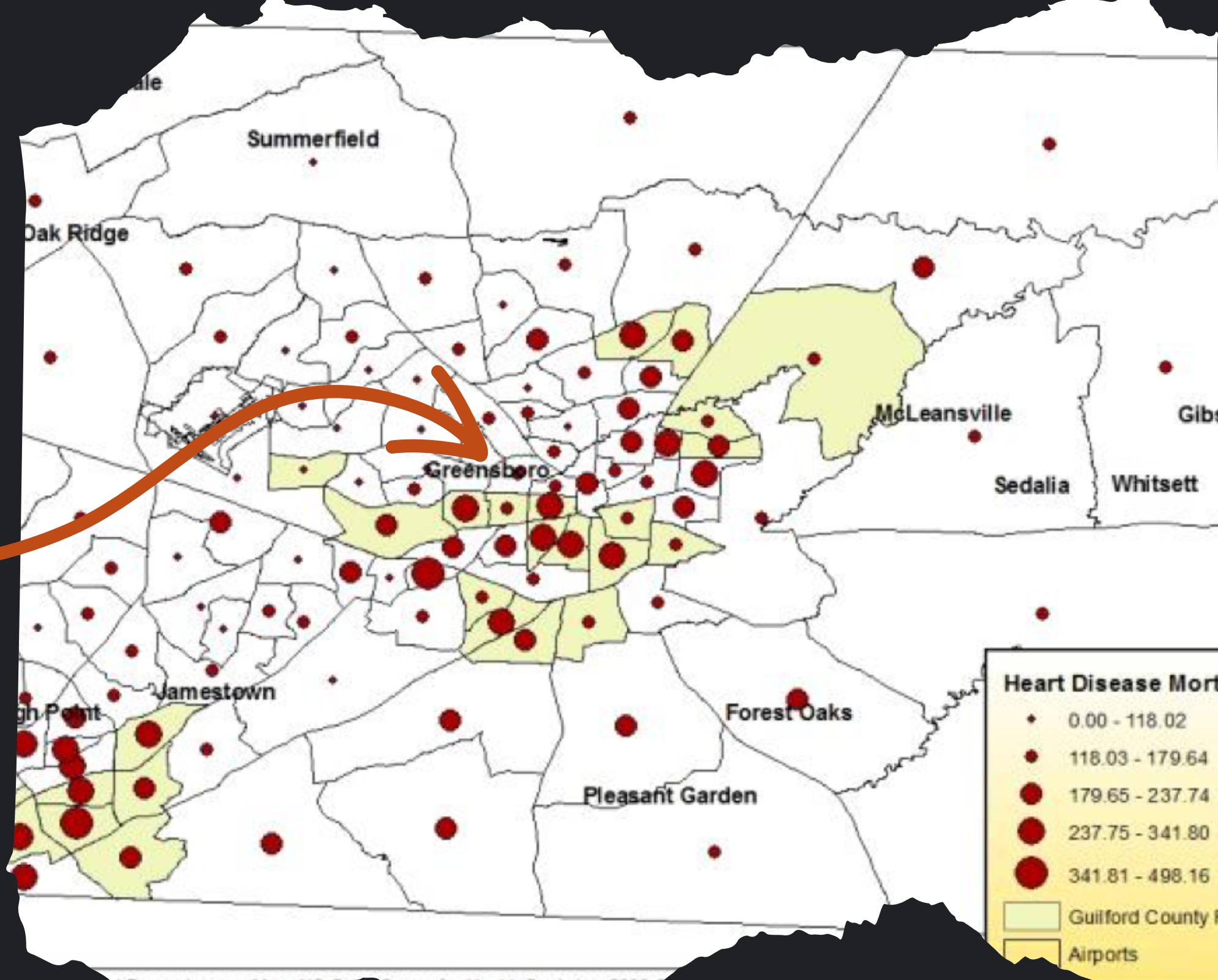
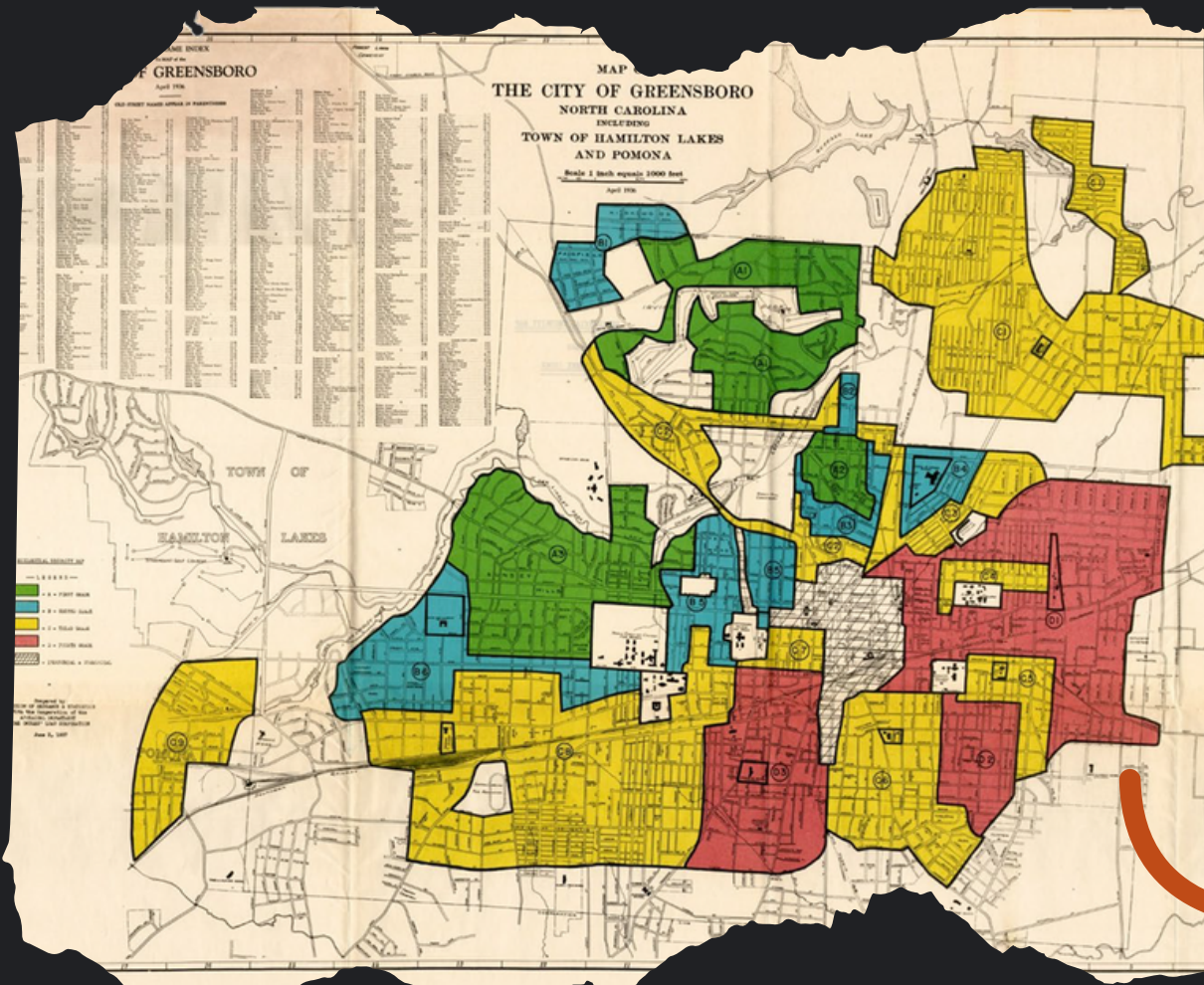
Credit: Not Even Past:
Social Vulnerability and the Legacy of Redlining



*Persons in Poverty by Census Tracts
Guilford County | 2019*



Percent with SNAP benefits in Food Desert Census Tracts
Guilford County | 2019

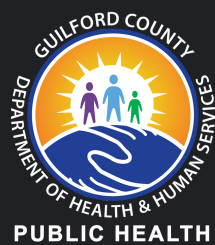


Heart Disease Mortality Rates and Food Desert Census Tracts
Guilford County | 2019

Climate and Economic Justice Screening Tool

- Census Tracts considered to be disadvantaged

See next slide for an example



High Point, NC |

Credit: Jordan Green



98TH

Low life expectancy

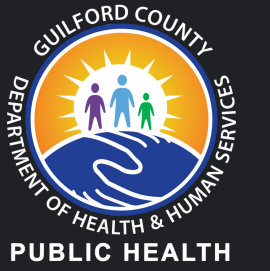
95TH

Proximity to hazardous waste facilities (within 3 miles)

96TH

Proximity to Risk Management Plan facilities (within 3 miles)

*High Point, NC - Census Tract
West English Road - West Ward Avenue*





98TH

Low life expectancy

95TH

Proximity to hazardous waste facilities (within 3 miles)

96TH

Proximity to Risk Management Plan facilities (within 3 miles)

91ST

Share of people who have been told they have asthma

94TH

Share of people ages 18 years and older who have diabetes (not including diabetes during pregnancy)

High Point, NC - Census Tract
West English Road - West Ward Avenue

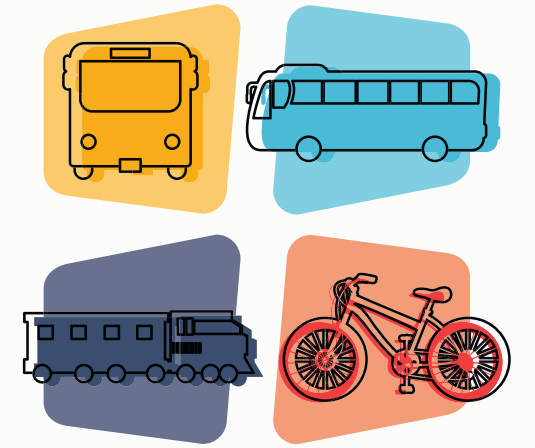
Leading health indicators



Air & water quality



Housing



Transit



Recreation & places to socialize



Diet & Exercise



Sexual health



Tobacco Use



Immunizations

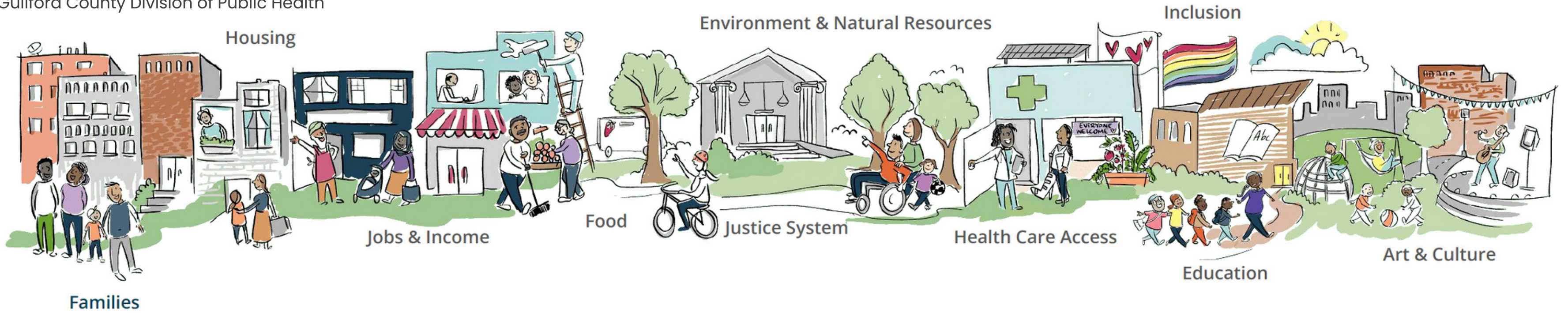


Substance Use

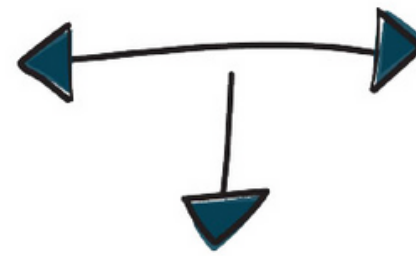
Summary

Photo: High Point, NC | Credit: Jordan Green





Power Imbalances



Structural Oppression



Families Separated



Diminished Housing Access



Food Security Threatened



Income Inequality Worsens



Justice Denied



Health Care Denied



Discrimination & Bigotry Normalized



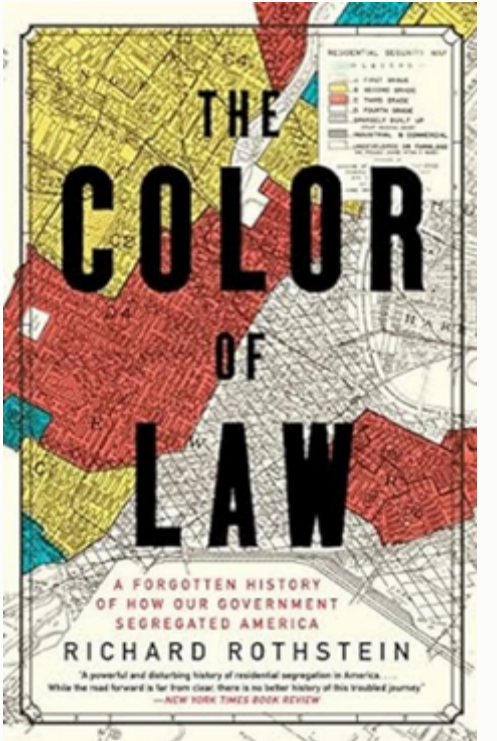
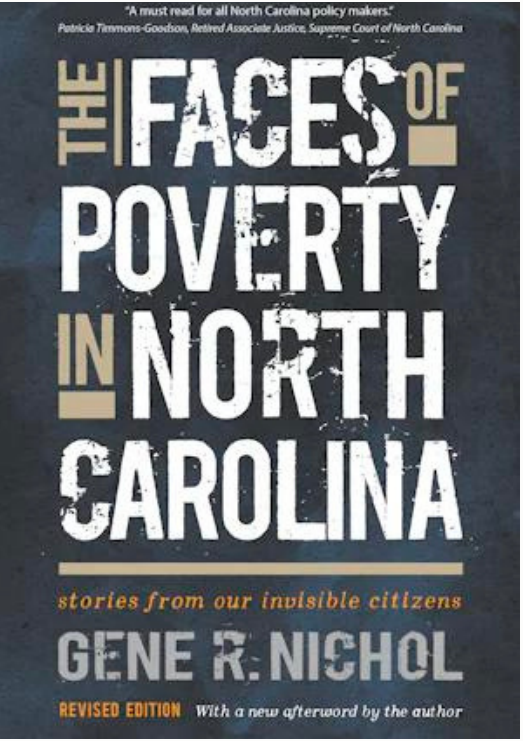
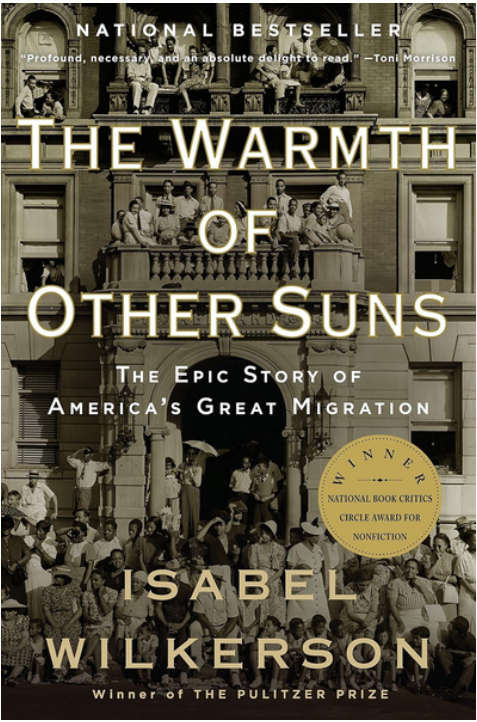
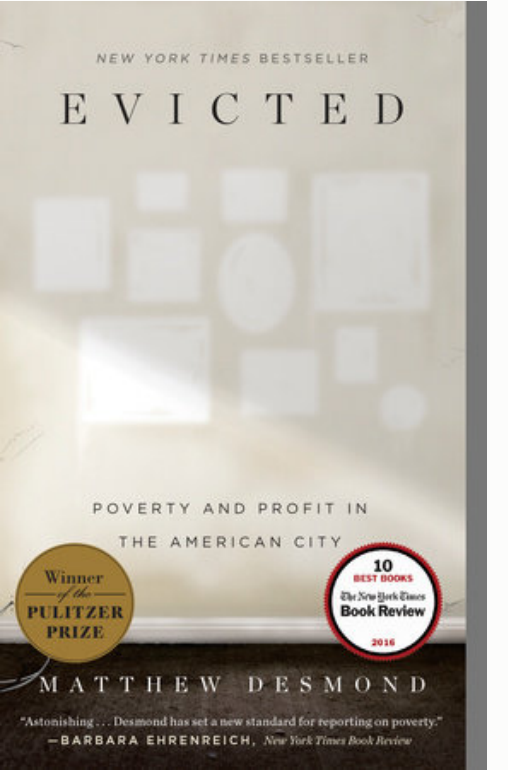
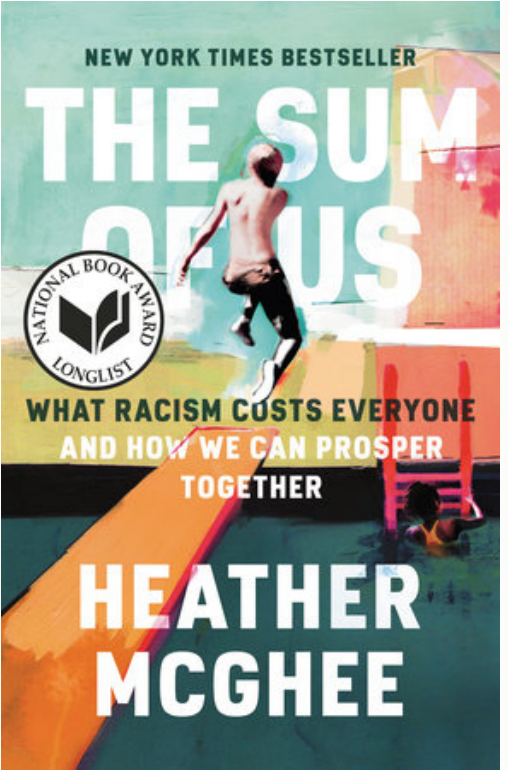
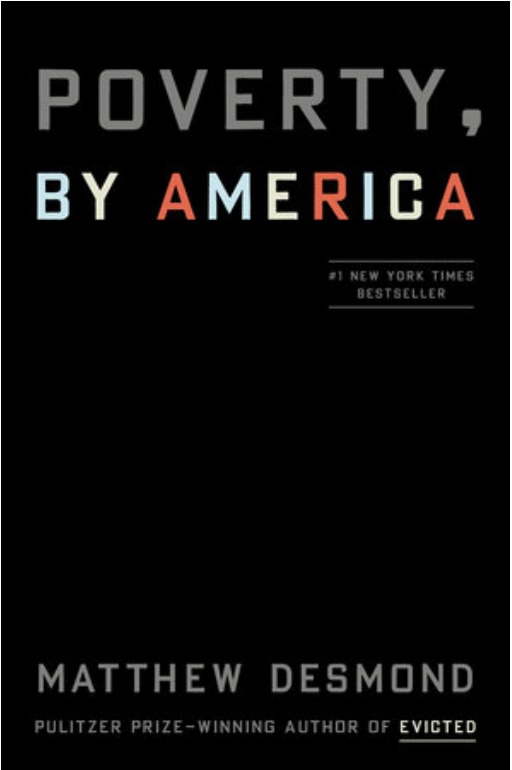
Natural Resources Threatened

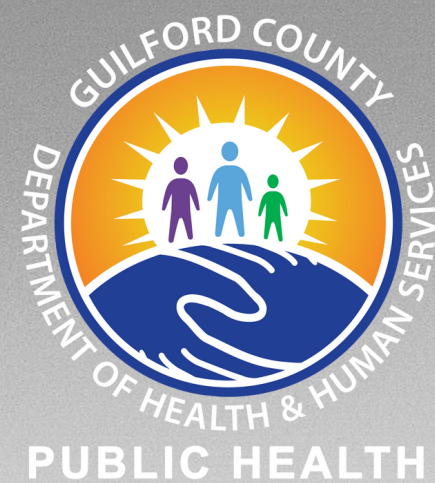


Public Education Defunded

Source: Human Impact Partners

RESOURCE PAGE





THANK YOU

Eli Saavedra Villatoro, PMP, MS, RDN

Health Education Division

Guilford County Division of Public Health

esaavedra@guilfordcountync.gov

(336) 641-3361

Photo: Downtown Greensboro, NC | Adobe Stock